

Schwind PresbyMAX® lunch symposium
ESCRS , Barcelona
2009

Tarek A. Wahab , MD
Cairo, Egypt



Clear Vision Laser Center
Cairo, Egypt



All treatments were performed at Clear Vision Laser Center, Cairo, Egypt

All patients were corrected with Schwind AMARIS PresbyMAX®

both eyes, same add. , same optical zone
and same surgeon

Inclusion Criteria

- Sphere within (-4D) (+4D)
- Astigmatism ≤ 2 D
- Corneal curvature between 40 and 48 D
- Central corneal pachymetry > 500 micron
- Preoperative DBCVA ≥ 0.8 or better .
- Near vision J3 or better with addition of +1.50 D
- Pupillometry : mesopic high within 2.5-3 mm



CLINICAL CASE :

A female, aged 50 Y , asked for LASIK surgery.
pre-operative data :

Refraction : RE: +2.0 -0.25 135° LE: +2.0 -0.50 5°

| UCDVA | | | BCDVA | | |
|-------|-----|-----|-------|----|---|
| OD | OS | B | OD | OS | B |
| 0.6 | 0.6 | 0.6 | 1 | 1 | 1 |

Distance vision is measured at 6 m ("infinity") in decimal acuity

| UCNVA | | | BCNVA (add: +2 D) | | | DCNVA | | |
|-------|-----|-----|-------------------|-----|-----|-------|-----|-----|
| OD | OS | B | OD | OS | B | OD | OS | B |
| 1.2 | 1.2 | 1.2 | 0.3 | 0.2 | 0.2 | 0.9 | 0.9 | 0.8 |

Near vision is measured at 40 Cm with Log RAD

Central Corneal thickness : RE 544 microns LE 542 microns

POST LASIK RESULTS :

After hyperopic astigmatism treatment :

Refraction : RE: +0.25 LE: +0.5 -0.25 15°

| UCDVA | | | BCDVA | | |
|-------|-----|-----|-------|----|---|
| OD | OS | B | OD | OS | B |
| 0.9 | 0.8 | 0.9 | 1 | 1 | 1 |

Distance vision is measured at 6 m ("infinity") in decimal acuity

| UCNVA | | | BCNVA (add: +2 D) | | | DCNVA | | |
|-------|-----|-----|-------------------|-----|-----|-------|-----|-----|
| OD | OS | B | OD | OS | B | OD | OS | B |
| 0.9 | 0.9 | 0.8 | 0.3 | 0.2 | 0.2 | 0.7 | 0.7 | 0.7 |

Near vision is measured at 40 Cm with Log RAD

PRESBYMAX :

The patient asked for near vision correction

After patient evaluation a PresbyMAX treatment was decided. The surgical plan was:

Rx RE: +0.25 = 1.00

Rx LE: +0.5 -0.25 15° = 1.00

Near vision add: +2.25 D

PresbyMAX was performed with Schwind AMARIS excimer laser.

A near vision add of +2.25 D was performed on both eyes over the residual refraction.

PRESBYMAX RESULTS :

AFTER THREE MONTHS

Reading acuity was determined using Radner Reading Charts.

The patient was VERY happy with her near vision (0.2 logRad) equals newspaper reading.

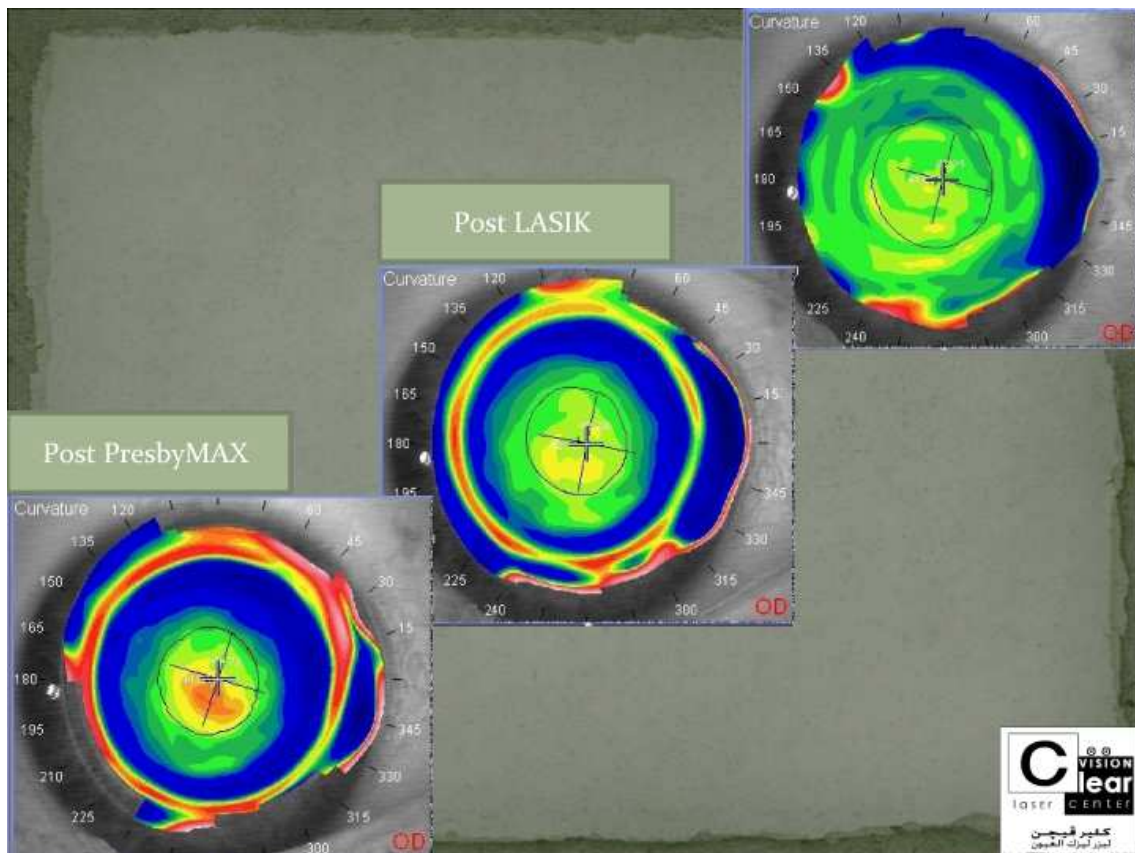
UCDVA was decimal 0.9 each eye & 1 for both eyes .

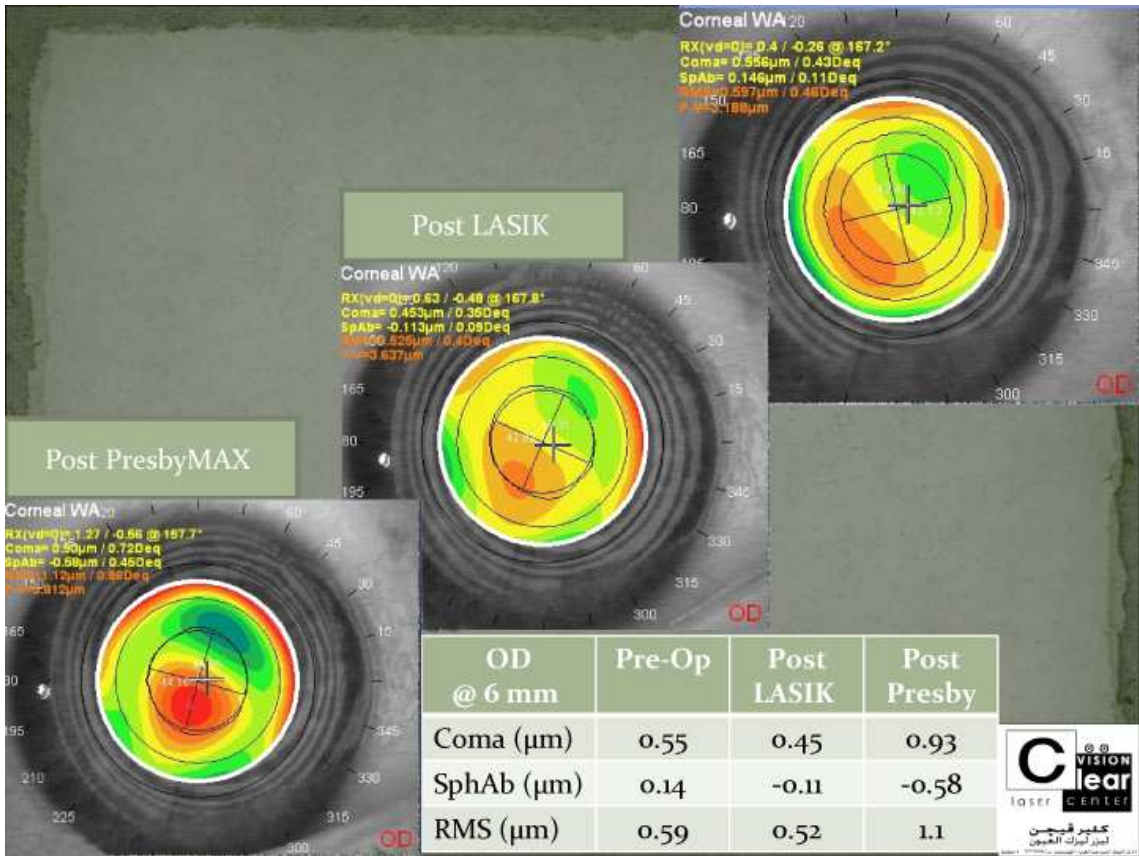
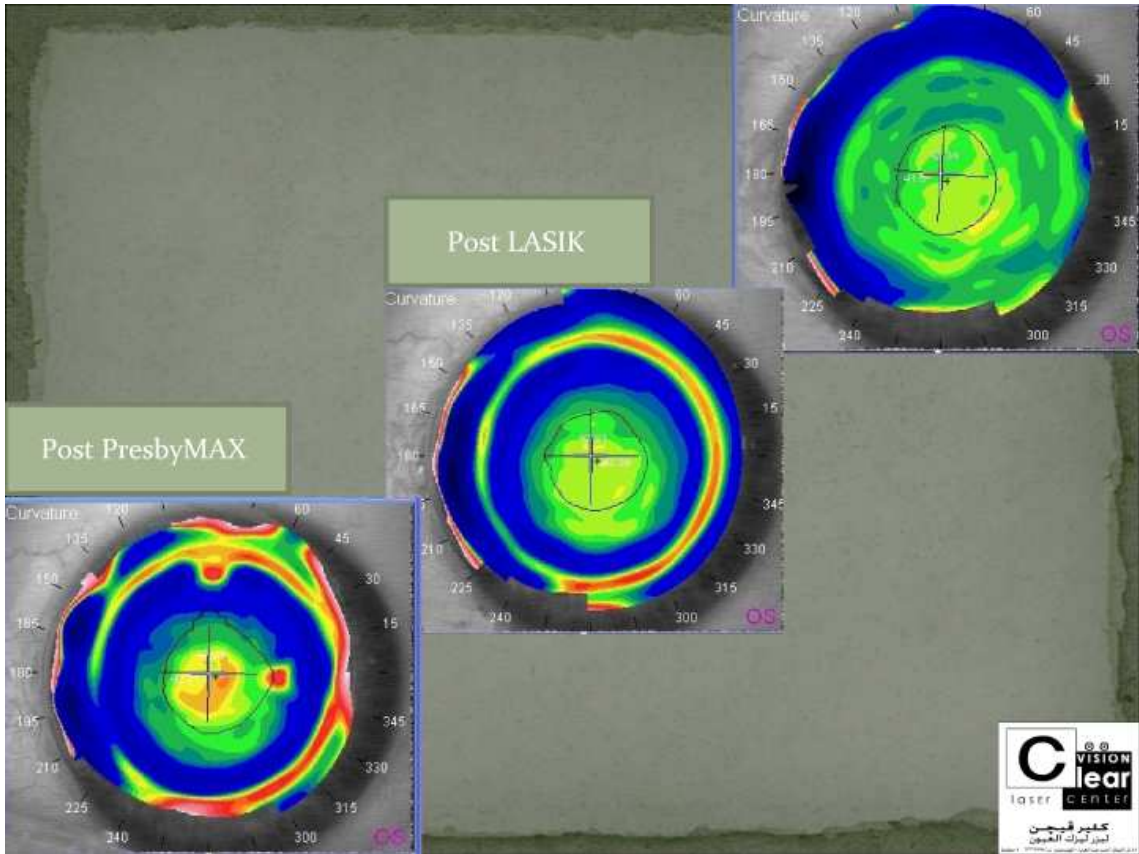
She doesn't need glasses. No photic phenomena.

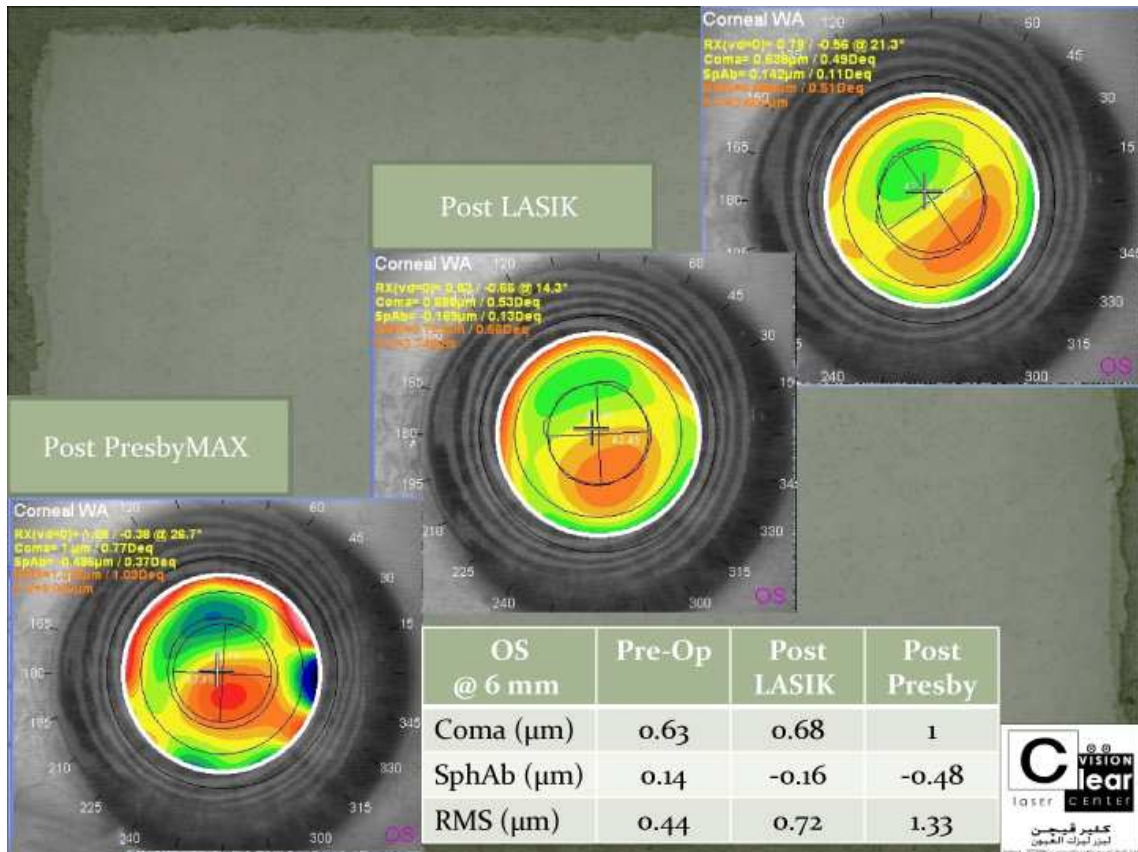
| UCDVA | | | UCNVA | | |
|-------|-----|---|-------|-----|-----|
| OD | OS | B | OD | OS | B |
| 0.9 | 0.9 | 1 | 0.2 | 0.2 | 0.2 |

UCDVA is measured at 6 m ("infinity") in decimal acuity

UCNVA is measured at 40 Cm with Log RAD







Why Presby Max ?

- Very good near vision quality.
- Near vision effect up to +2.25D.
- Good distance vision quality .
- Pupil dependent, BUT pupil predictive.
- Synergistic with convergence myosis and line of sight
- Works in hyperopes , myopes, emmetrops and previous lasik cases
- It is a NEAR vision dominant procedure when pupil is constricted and FAR dominant when dilated
- Minimal tissue ablation added to the correction of the main defect

Thank you